



Lenox Instrument Company, Inc.
265 Andrews Road • Trevose, PA 19053
USA 800-356-1104 • Worldwide 215-322-9990
Fax 215-322-6126 • sales@lenoxinst.com

Tin Bath Periscope System

A durable and rugged, high-temperature remote viewing video camera system designed specifically for the float glass process



Backed by over eighty years of experience, the **Lenox Tin Bath Periscope System** is designed to provide real time, high-resolution images in the tin bath environment. A specially designed and proven water-jacketed lens assembly enables operation in this hostile environment.

Join float glass manufacturers like AFG, Cardinal, Pilkington, and PPG that are using the **Lenox Tin Bath Periscope System** to monitor and record the amount of trim being produced, wheel depth and tracking, and the functioning of the automated drive system (top knurl wheels) - helping to reduce scrap by insuring ribbon integrity and improving overall process efficiency.

Standard System includes:

Specifications are subject to change without notice

Lens system and water jacket

- 2.5" O.D. by 10' - 6" working length & right angle direction of view
- 30-degree field of view
- Installed temperature sensor to monitor temperature at the lens objective
- High flow water shroud with mounting flange and nitrogen purge

Camera Housing

- Rugged protective enclosure provides interface with water jacket
- Camera mounting assembly with slide plate for focusing
- Video, electrical and temperature sensor output connections

CCD black & white camera

- 570- line horizontal resolution for maximum contrast and resolution

Optional Accessories:

Monorail insertion / retraction assembly

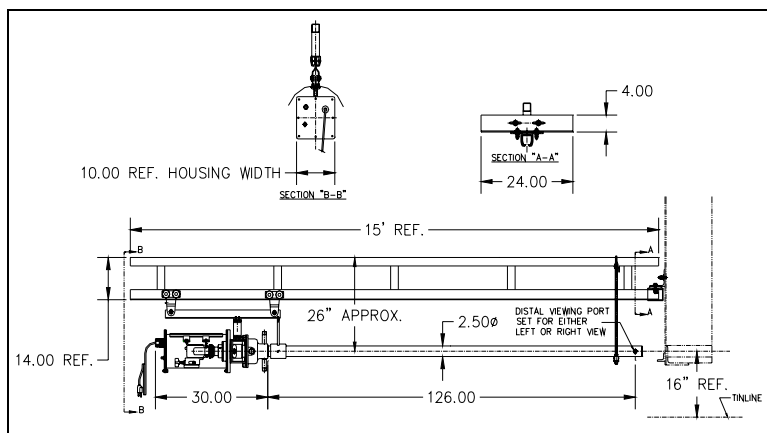
- Manually operated – wall mountable with ceiling supports

CCD color camera with 480-line horizontal resolution

Black & white and color 12", 17" and 20" monitors

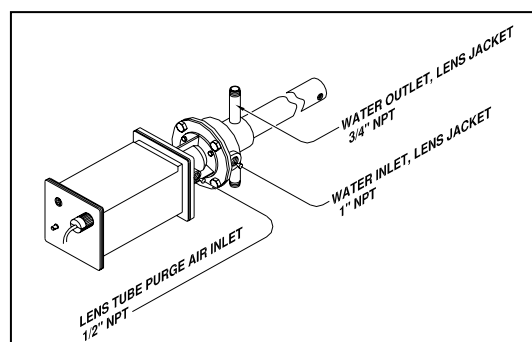
Video / Digital image recording to capture and store images for documentation

Monorail Insertion / Retraction Assembly



The optional monorail assembly includes a reinforced monorail track for mounting to the tin bath. The periscope is coupled to a trolley assembly by way of two mounting sleeves.

Periscope Water and Air Connections



Lens cooling / purging requirements:

Instrument quality with flow rate of 3 SCFM

Water-cooling requirements:

Water pressure rates of 20 – 30 PSIG provides flow rates of 25 – 32.5 GPM